

Return-to-Work Town Hall: PART 8

SEPTEMBER 16, 2020

RUTH KRISTOPOLSKI, MBA

Senior Vice President, Population Health

LEWIS MCCURDY, MD

Specialty Director, Infectious Diseases

NICOLETTE DAVIS, MPAS, PA-C

Assistant Specialty Medical Director, Occupational Medicine

DAVID COSENZA, MD

Specialty Medical Director, Employer Solutions & On-Demand Telemedicine



01

Ruth Krystopolski, MBA

Senior Vice President, Population Health

Introduction

Today's Topics

01

Q&A on the Newest
Treatments, Testing
& Guidance

02

Preventing Spread in
the Workplace

03

The Prolonged Impact
of COVID-19

04

COVID-Safe
Consulting

Please submit questions via the chat function.

Meeting Recap

This meeting is being recorded and will be available on our resource page:

AtriumHealth.org/EmployerSolutions/COVID

The image shows a YouTube video player interface. At the top, there is a search bar and the YouTube logo. The video title is "Return to Work Town Hall" in large blue font, with the date "April 23, 2020" below it. The video description lists four speakers: Ruth Krystopolski, MBA (Senior Vice President, Population Health), Lewis McCurdy, MD (Specialty Director, Infectious Diseases), David Cosenza, MD (Specialty Medical Director, Employer Solutions & On-Demand Telemedicine), and Karla Lever, PhD, LCMHCS, CEAP (Director, Employee Assistance Program). The video thumbnail features a large blue virus particle graphic surrounded by various medical icons. The Atrium Health logo is visible in the bottom right corner of the video player. Below the video player, the video title "Return to Work Town Hall with Atrium Health" is displayed, along with "Unlisted" status, "111 views · Apr 27, 2020", and interaction icons for likes (0), dislikes (0), share, save, and a menu. The Atrium Health channel name and "3.69K subscribers" are shown at the bottom left, and a red "SUBSCRIBE" button is at the bottom right.

02

Lewis McCurdy, MD

Specialty Director, Infectious Diseases

*Q&A on the Newest Treatments,
Testing & Guidance*

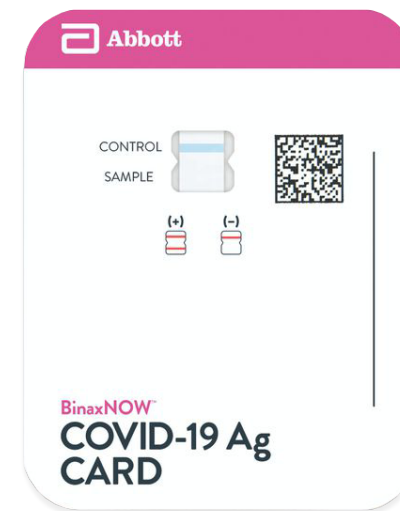
Q&A

Testing

Abbott's new BinaxNOW rapid test seems to be a game changer in terms of affordability and speed of results.

How can I access this testing option?

Are saliva tests that have Emergency Use Authorization (EUA) approval a reliable and more affordable option than EUA-approved tests that use a nasal swab for collection?



Q&A

Fact Check: Guidance and Stats

Last month, the CDC issued guidance that “you do not necessarily need a test” if you’ve been in close contact with a person with COVID-19 but have no symptoms. However, a blog posted two weeks ago by the NIH stated “if you have no symptoms but think or were told you were in contact with a person with COVID-19” you should get a test. **Which guidance is correct?**

There have been reports that only 6% of the deaths attributed to COVID-19 were actually caused by COVID-19. **Is that true?**

Q&A

Treatments

What is convalescent plasma? Who can donate it and should they if they can? Can it protect me from getting COVID-19?

What are some of the most promising treatments for COVID-19 you have seen to date?

Q&A

COVID-19 Vaccine

What do you think is a realistic timeline for when a vaccine will be available?

Understanding that healthcare workers, frontline workers and high-risk individuals will be first in line, **how long after a vaccine is first available will it be accessible to the general public?**

03

Nicolette Davis, MPAS, PA-C

Assistant Specialty Medical Director,
Occupational Medicine

Preventing Workplace Spread

Preventing Workplace Spread

Ongoing vigilance with prevention measures protects employees and customers.

- Even organizations that never closed should reevaluate workspaces and business practices.
- Contacts made in the workplace represents 20-25% of all weekly contacts.
- Working generates 10 additional contacts per day compared to those that stay at home.



Preventing Workplace Spread

Industries with the highest average number of contacts per day:



Retail/hospitality

90

contacts per day



Manufacturing

47

contacts per day

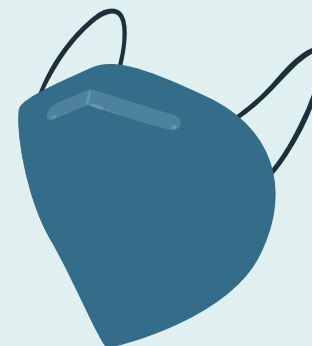
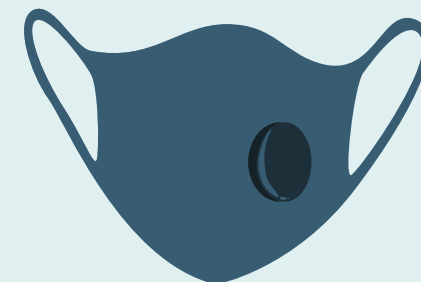
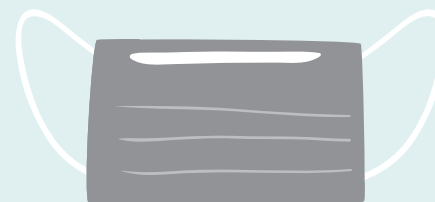
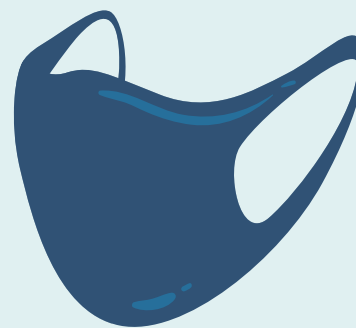
Workspaces

- Adapt work environments to maintain **physical distancing**
 - Consider plexiglass cough guards or other barriers for areas where physical distancing isn't possible (e.g. checkout lines)
- Look at **circulation** and adjust foot traffic in narrow spaces and areas where it's difficult to maintain a 6' distance
- Implement **frequent cleaning and disinfection** of workstations and high-touch surfaces such as doorknobs, copier/printer equipment, breakroom refrigerators and microwaves



Personal Protective Equipment (PPE)

- Encourage employees to wear **face masks** in the workplace, if appropriate
- Evaluate each job to determine **additional PPE** that might be needed (e.g. gloves, goggles, face shields, gowns)
- Educate employees on how to **properly wear PPE**



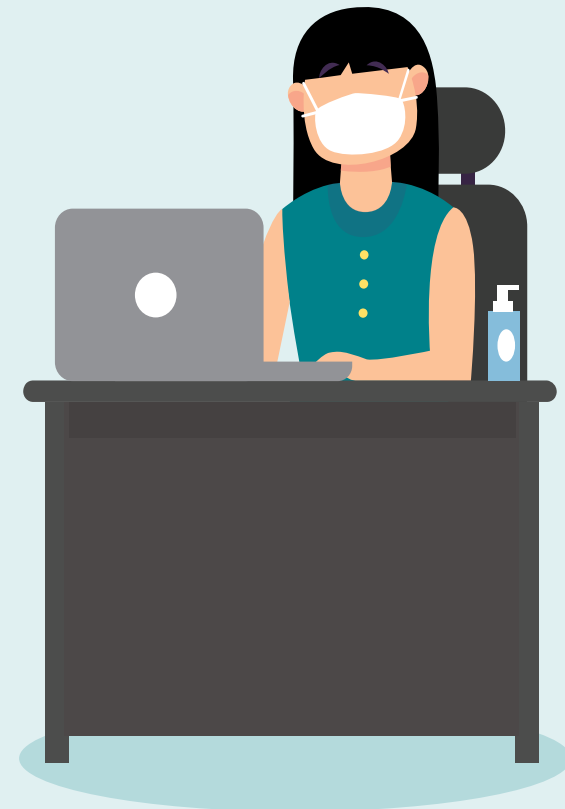
Safe Work Practices

- Encourage **social distancing** of at least 6', especially in common areas such as breakrooms, restrooms and elevators
- Support **hand hygiene** management
- **Screen** employees before each workday
- Have a plan in place for how you'll manage **workplace exposures**



HR Policies

- Identify **high risk employees** and special accommodations that will provide them with extra protections
- Consider **work scheduling** that supports social/physical distancing and contact tracing



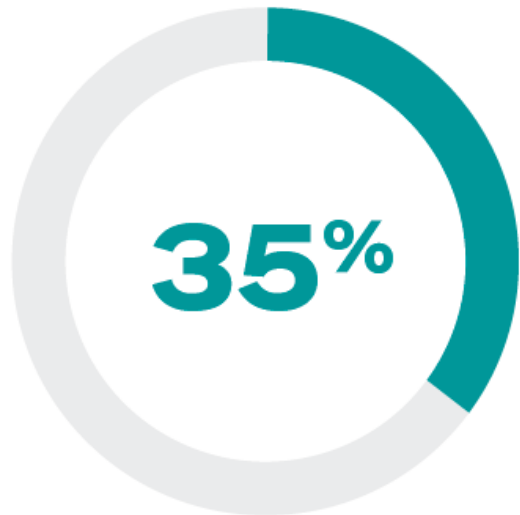
04

David Cosenza, MD

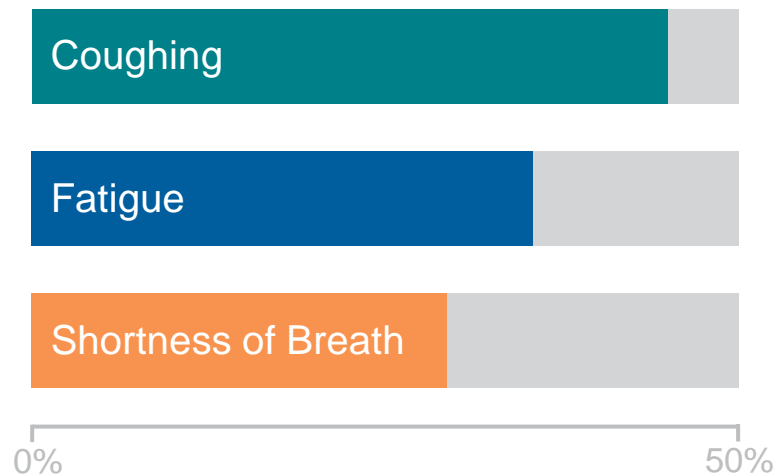
Specialty Medical Director, Employer
Solutions & On-Demand Telemedicine

The Prolonged Impact of COVID-19

The Prolonged Impact of COVID-19



35% of respondents had not returned to their usual state of health when interviewed 2 to 3 weeks after testing.

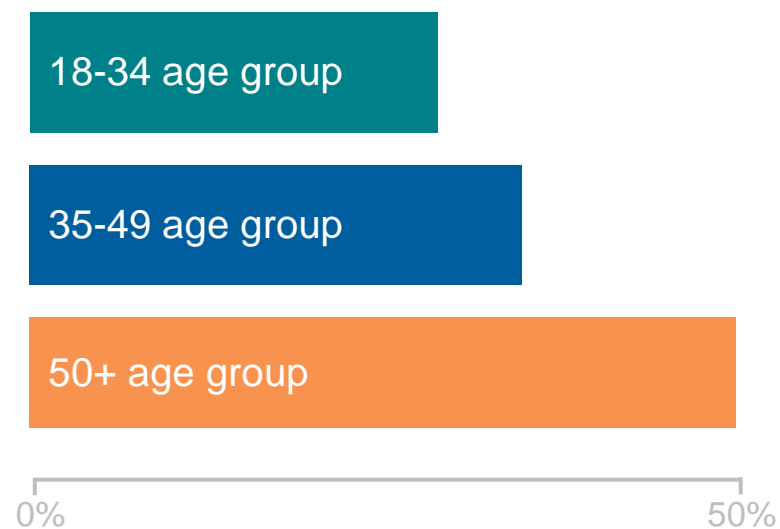


Of those who were still exhibiting symptoms 2 to 3 weeks after testing positive for COVID-19, **45%** reported coughing, **35%** reported fatigue, and **29%** reported shortness of breath.



Among people aged 18 to 34 years with no chronic medical conditions, **1 in 5** had not returned to their usual state of health.

The Prolonged Impact of COVID-19

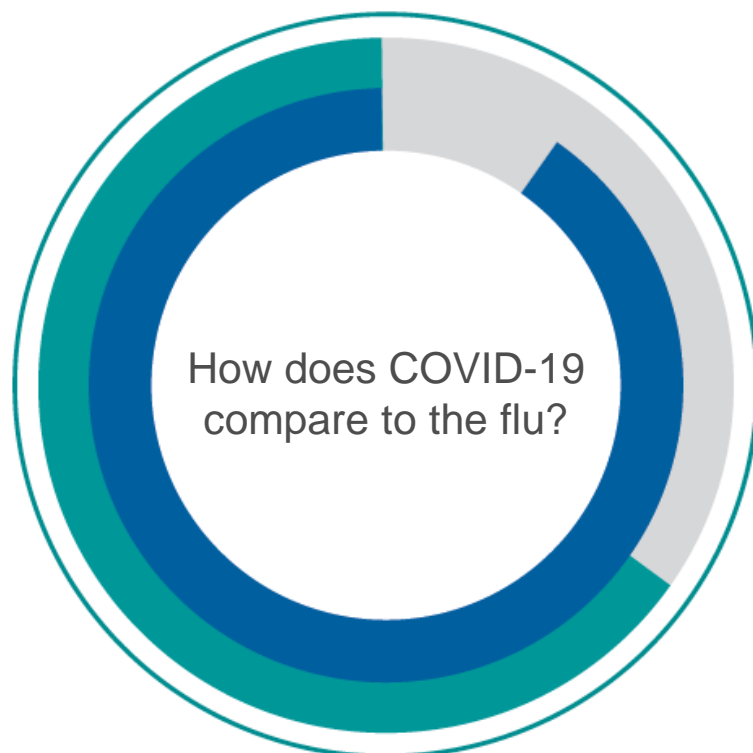


26% of 18 to 34 year olds, **32%** of 35 to 49 year olds, and **47%** of 50+ year olds were still exhibiting symptoms for 2 to 3 weeks after testing positive for COVID-19.

That is why preventative measures, including social distancing, frequent handwashing and the consistent and correct use of face coverings in public, should be strongly encouraged to slow the spread of COVID-19.



COVID-19 vs. The Flu



More than **90% of outpatients with influenza recover within approximately 2 weeks** of having a positive test result.

- Influenza patient recovery
- COVID-19 patient recovery (within 2 weeks of testing positive)

05

Ruth Krystopolski, MBA

Senior Vice President, Population Health

COVID-Safe Consulting

COVID-Safe Consulting

Ensuring physical workspaces and operational protocols are optimized to prevent spread and protect employees and customers

- On-site assessment of workspaces by Atrium Health experts
- Guidance on implementing basic infection prevention measures
- Review of safe work practices and administrative considerations
- Summary of findings



06

Grady Hardeman, LAT, ATC

Director, Employer Solutions

Q&A and Closing

Q&A



Atrium Health

Next meeting:

***Wednesday, November 18,
3-4 PM***

Where to go for additional information:

Email COVID19RTW@AtriumHealth.org with questions, topic suggestions for the next Town Hall, or to request more information on Atrium Health COVID-19 screening and testing.

Visit AtriumHealth.org/EmployerSolutions/COVID for the most updated *COVID-Safe for Employers* content and tools.

EMPLOYER SOLUTIONS

Thank you.



Atrium Health