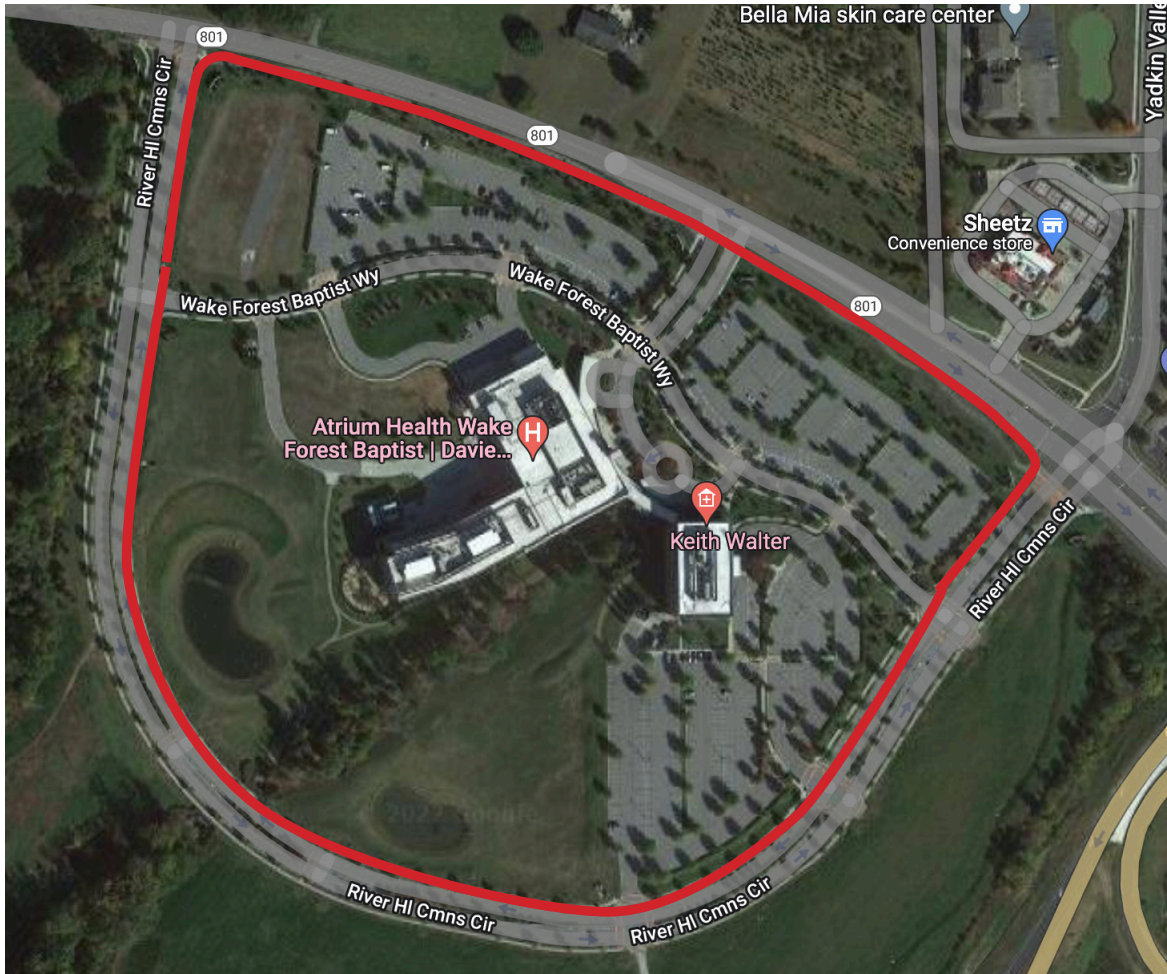




## Davie Medical Center Walking Trail | Route 9, 1.1 miles



### Directions:

- Start at the sidewalk closes to the (name of the street) at the Plaza I patient/community parking lot.
- Follow this sidewalk all the way around the backside of the campus
- Continue straight across the street until you reach the sidewalk closes to the 801 highway.
- Stay straight down this sidewalk
- Continue right on to the (name of the street) sidewalk
- Turn right and continue until you reach the stop sign
- Turn left so you should be crossing the street
- Walk back to the outside sidewalk
- Turn right
- Continue on the side walk until you reach which is the Plaza I patient/community parking lot.