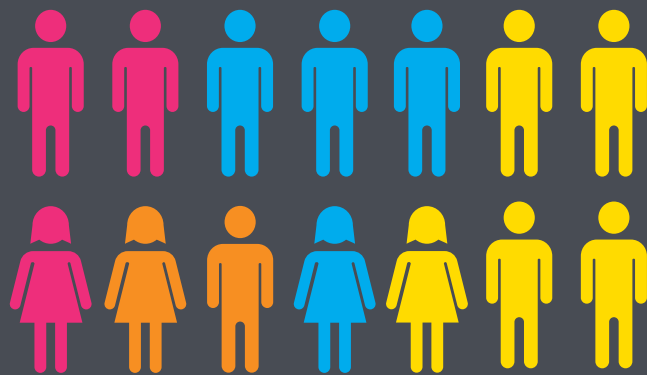


# WF3MII

## 2019 Internship

### 14 STUDENTS



3 Freshmen

2 Sophomores

4 Junior

5 Graduate

### 12 SCHOOLS



### PROJECTS



AMS Machine Learning Models



Bladder Anatomy



Cancer



CCC Web Platform



Clinical Trial activation



Data cleaning/quality



Diabetes registry



Diagnosis Mapping



Federated Learning



ICU Med Safety



Networked Data Models



NLP disease classification



NLP Pipeline



Patient Paths



UMLS Restful API

### RATINGS



- If given a chance to return for another internship or regular employment would you consider it?
- How well did your mentor guide you this summer?
- How well did the internship match your expectations?
- Do you feel your project/work was challenging and interesting?

### TESTIMONIALS

"I am now strongly considering WF for graduate school. I like the people and the area as well as research topics of interest."



"The scope for research is astounding. There are so many different applications and areas where research can be conducted"



"Any expectations I had were far surpassed and I could not have been more at ease about asking for help or working with my mentor."



### TWO 2ND PLACE AWARDS: REU Symposium



**Enes Yazgan**

"Identifying Bladder Layers from H&E Images using U-Net Image Segmentation"



**Suraj Rajendran**

"NLP Pipeline development for determining smoking status"

### 9 MENTORS

Umit Topaloglu, PhD



Brian Ostasiewski



Michael Horvath



Franck Diaz, PhD



TJ Colvin



Eric Kirkendall, MD



Brian J. Wells, MD, PhD



Khalid Niazi, PhD

