

2019

STATS

 **Wake Forest Baptist Health**[®]

WELCOME

Welcome to Wake Forest Baptist Health STATs! I am so excited to share this new version of our latest stats and facts with you. We have taken Fact Book and totally reimagined it to reflect the growing, exciting health care system that we have become. Next year, we will produce a companion version that will focus on our institutional programs and centers and the accomplishments of each for the past year. Stay tuned for this.

Our institution is changing. We are growing and we are taking care of more patients than ever before. Last year High Point Medical Center joined the Wake Forest Baptist family, expanding patient services, treatment options and access that is close to home. This is so very important and aligns with our mission to improve the health of all in the communities we serve.

Our researchers are making new, important discoveries that will change the therapies that exist and bring better care and outcomes for patients who are born before their due date or aging beyond what is now considered the human lifespan. Whether they have cancer, neurological, cardiovascular or cognitive conditions, we are looking for ways to improve the quality of their lives.

Our students are pushing the traditional boundaries of medical education, learning through experience, both simulated and hands-on. When our students see or treat a patient for the first time, is not after graduation, it's during medical school. Our innovators are working on the health care processes, tools and devices that will improve clinical practice and advance the effectiveness of our patient care models.

We live in exciting times. Join me in this incredible journey.



Julie Ann Freischlag MD, FACS, FRCS, Ed(Hon), DFSVS

Chief Executive Officer, Wake Forest Baptist Health
Dean, Wake Forest School of Medicine



VISION, MISSION AND PROMISE

OUR VISION

A preeminent learning health system that promotes better health for all through collaboration, excellence and innovation.

OUR MISSION

Wake Forest Baptist Health's mission is to improve the health of our region, state and nation by:

- Generating and translating knowledge to prevent, diagnose and treat disease.
- Training leaders in health care and biomedical science.
- Serving as the premier health system in the region, with specific centers of excellence recognized as national and international care destinations.

OUR PATIENT AND FAMILY PROMISE

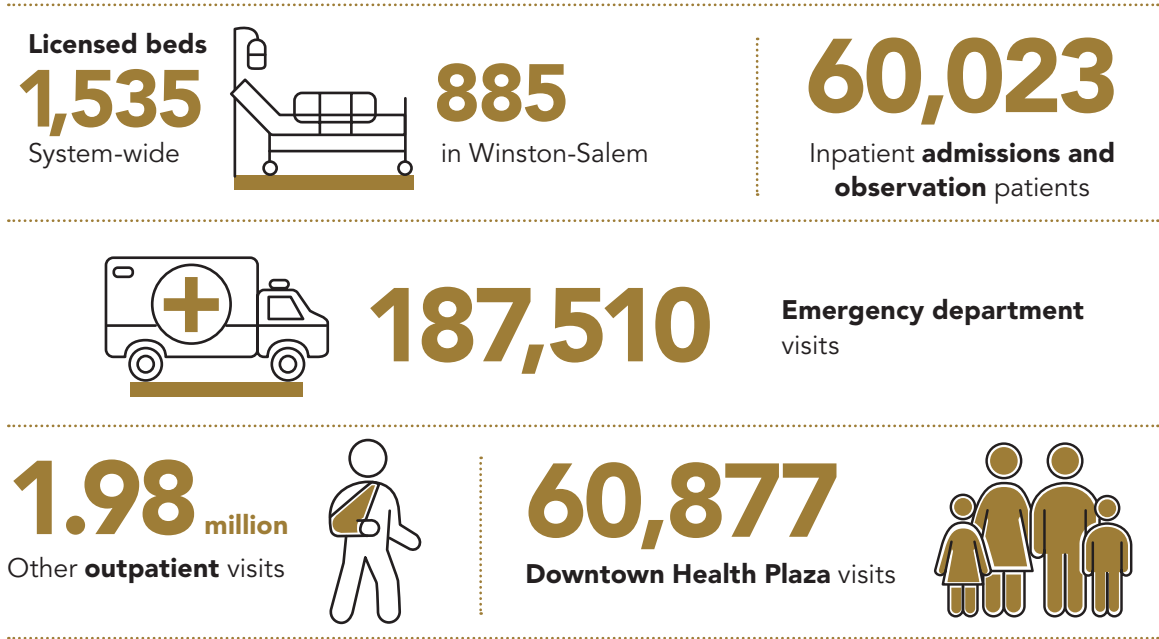
Wake Forest Baptist offers its patient promise to patients and their families no matter the situation or circumstance.

We will...

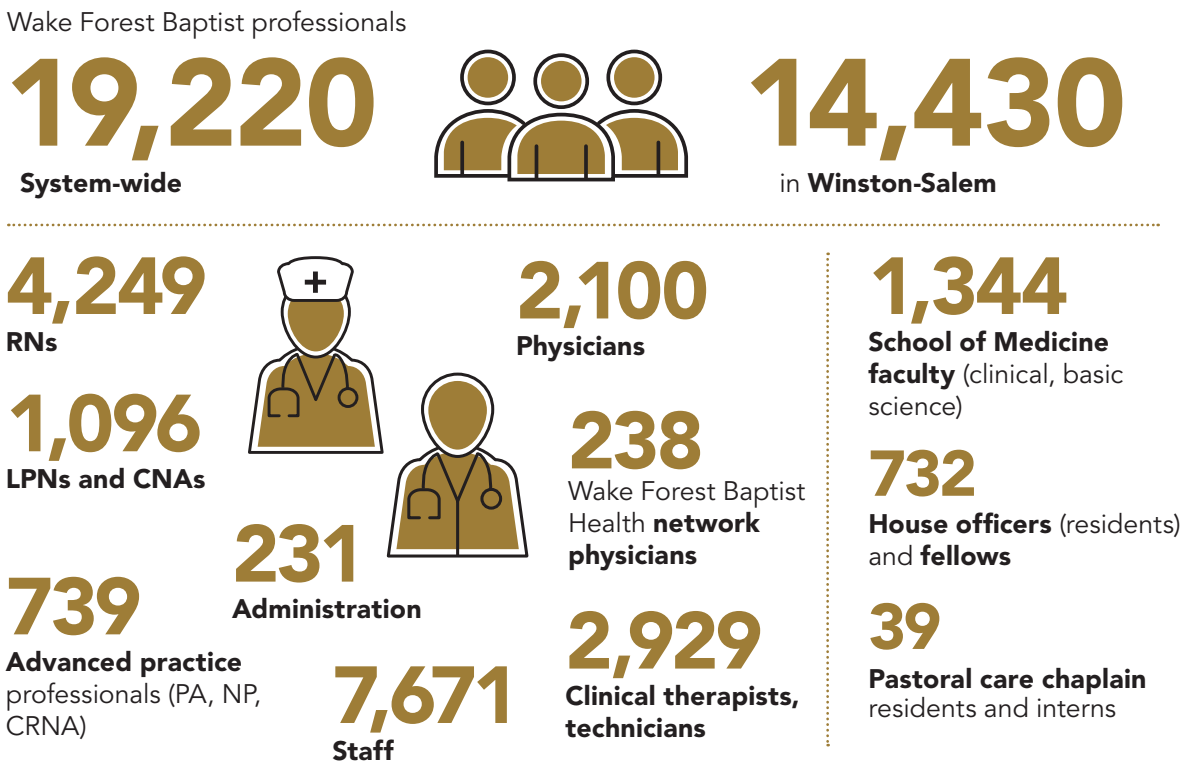
- Keep you safe.
- Care for you.
- Involve you and your family.
- Respect you and your time.



OUR PATIENTS



OUR PROFESSIONALS



GIVING BACK

During fiscal year 2017, Wake Forest Baptist Health direct benefits to our home community were valued at \$373.9 million, including educational, research and outreach programs and services, community health, subsidized health and charity care. The role this community plays in these programs through philanthropic gifts is critical. Wake Forest Baptist Health's work is a true exchange and partnership.

HIGHLIGHTS

Community Health

\$6.8 million

Wake Forest Baptist Health contributed to services that improved the health of the community, as well as cash and in-kind contributions to community groups and community-building activities.

Subsidized Health

\$2.4 million

Wake Forest Baptist Health finances subsidized health programs, primarily the Downtown Health Plaza in Winston-Salem, which provides care for the underserved and uninsured.

Research

\$32 million

Wake Forest Baptist Health directly funded research to diagnose, cure and prevent disease. Research is an important driver of regional economic development.

Charity Care

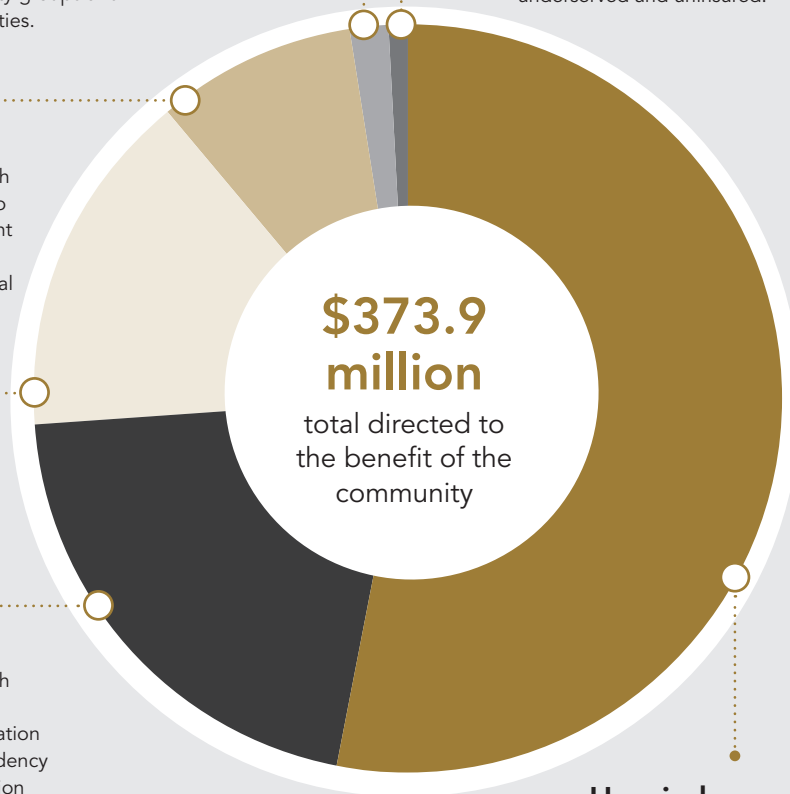
\$57 million

The amount Wake Forest Baptist Health spent on caring for the uninsured.

Education

\$77 million

Wake Forest Baptist Health provided funding for the training of the next generation of physicians through residency and other medical education programs.



\$373.9 million
total directed to the benefit of the community

Unreimbursed Costs of Government Programs

\$199 million

Payments from government-funded Medicare and Medicaid programs that fell short of covering the cost of care.

Note: All numbers are rounded up.



THREE PATHS. ONE MISSION.

Since the founding of the medical school in 1902 and North Carolina Baptist Hospital in 1923, Wake Forest Baptist Health has grown into a nationally recognized academic medical center and health care system, operating as an integrated enterprise of educational and research facilities, hospitals, outpatient clinics, emergency and urgent care centers, diagnostic units, physician practices and a commercialization division to bring innovative technologies to the bedside.

As a learning health care system, Wake Forest Baptist combines the delivery of superb patient- and family-centered care with a proven record of outstanding achievement and pioneering efforts in education and research. Its enterprises are Wake Forest Baptist Health and Wake Forest School of Medicine.

Wake Forest Baptist Health is a regional health care system anchored by the 885-bed tertiary care hospital and campus in Winston-Salem. This campus is home to the adult and pediatric Level I Trauma Centers and Burn Center, the 144-bed Brenner Children's Hospital and 167-bed Comprehensive Cancer Center, serving patients in northwest North Carolina and southwest Virginia.

The regional health care system's network encompasses the main campus and four community hospitals, the 50-bed **Wake Forest Baptist Health Davie Medical Center** in Davie County, the 351-bed **Wake Forest Baptist Health High Point Medical Center** in Guilford County, the 94-bed **Wake Forest Baptist Health Lexington Medical Center** in Davidson County and the 130-bed **Wake Forest Baptist Health Wilkes Medical Center** in Wilkes County. Through a joint venture, Hugh Chatham Memorial Hospital and Wake Forest Baptist acquired Alleghany Health, a 25-bed critical access hospital in Alleghany County.

Wake Forest Baptist also operates three urgent care centers; the emergency departments at more than a dozen community hospitals; maternal-fetal and neonatal units; freestanding dialysis, imaging and endoscopy facilities; and, with Wake Forest Health Network's community practices, more than 232 primary and specialty care clinics.

Wake Forest School of Medicine, one of the nation's best and most selective medical schools, offers M.D., physician assistant, nurse anesthesia, doctor of nursing practice, residency, fellowship and graduate degree programs. It also is a leading research center in the fields of aging and cognition, addiction, cancer, heart and vascular, diabetes, metabolism and obesity, neurosciences, public health sciences and regenerative medicine. The School of Medicine ranks in the top half among its national peers in funding from the National Institutes of Health.



TRAINING TOMORROW'S MEDICAL LEADERS



The Wake Forest School of Medicine offers a transformational and supportive experience to cultivate physicians and health care providers who set the standard for compassionate, collaborative care; lead the way in socially responsible health care and biomedical sciences locally, nationally and globally; and engage in lifelong learning and discovery through the application of innovative knowledge, experiential technology and skills in medicine.

The School of Medicine also provides continuing medical education and advanced training for health care professionals through the Northwest Area Health Education Center (AHEC), as well as leadership and organizational development, education and research in continuing medical education.

Our Bowman Gray Center for Medical Education in Innovation Quarter allows us to use state-of-the-art technologies, and offer students an experiential curriculum that simulates real clinical events in inpatient and outpatient settings — helping them learn the skills needed for the next generation of physician leaders



School of Medicine **Faculty**



732
House Officers
(residents)
and fellows



510
Medical
students



319
Graduate
students



173
Physician
Assistant
students



48
Nurse
Anesthesia
(CRNA)
students



11
Doctor
of Nurse
Practice
(DNP)
students

5



Joint-degree programs

Clinical site for
several Forsyth
Tech Community
College
programs



42,076

Continuing education, advanced
health care professionals trained
through Northwest AHEC



RESEARCH AND INNOVATION

The School of Medicine strategically investigates opportunities that expand basic and clinical investigations, resulting in nationally and internationally recognized excellence in biomedical research. We seek to leverage our current areas of strength and focus to improve the integration of our research programs with areas of major importance in population health. The ability to offer patients the latest technologies, evidence-based treatments and clinical trials makes Wake Forest Baptist a national leader among academic medical centers.

Current research priorities include:

- Aging and cognition
- Diabetes, obesity and metabolism
- Associated cardiovascular, stroke and neurological illness and injury
- Cancer
- Regenerative medicine

RESEARCH FUNDING

\$168.7

million

Federal funding

\$14.6

million

Industry funding

\$212.4

million

Total funding

430

Clinical trials underway

\$13.4

million

State funding

\$15.7

million

Other funding



INNOVATION

Filed

497

patent applications



Formed

17

startup companies



Saw

248

patents issued to faculty and staff



Executed

120

licensing and option agreements

Generated

\$222 million

in licensing revenue



Generated

\$12.1 million

in industry research collaboration revenue

OUR PROMISE TO BE THE BEST

We are dedicated to providing quality care and a safe hospital environment. To ensure we are doing the best for our patients, we constantly evaluate our performance and measure it against other top hospitals. Here are some of our recognitions and achievements:

QUALITY HEALTH CARE AWARDS

- Wake Forest Baptist's Comprehensive Cancer Center is one of only three in North Carolina and 49 in the country to be designated as "comprehensive" by the National Cancer Institute. Wake Forest Baptist has continuously held the designation since it was introduced in 1990.
- Wake Forest Baptist is one of 103 medical centers nationwide to be certified as a Comprehensive Stroke Center by The Joint Commission and the American Heart Association/American Stroke Association.
- Wake Forest Baptist has received the American College of Cardiology's NCDR ACTION Registry Platinum Performance Achievement Award for 2018. The Platinum Award recognizes our commitment and success in implementing a high standard of care for heart attack patients, and indicates that we have reached an aggressive goal of treating these patients to levels of care outlined by the American College of Cardiology/American Heart Association clinical guidelines and recommendations. We are among only 203 hospitals nationwide to receive this honor.





NATIONAL ACCOLADES

- Wake Forest Baptist Medical Center was ranked in 2018 by U.S. News & World Report among the nation's "Best Hospitals" in seven adult medicine areas: Cancer (19th), Nephrology (38th), Ear, Nose & Throat (30th), Geriatrics (31st), Pulmonology (41st), Neurology & Neurosurgery (47th) and Gynecology (49th). This marks the 26th consecutive year that Wake Forest Baptist has been ranked among the nation's top hospitals by U.S. News & World Report.
- Wake Forest Baptist Medical Center has received the Consumer Choice Award as the top-rated hospital in the Winston-Salem area every year since 1999. These awards are determined through surveys by NRC Health, formerly the National Research Corp., on the basis of hospitals' scores in multiple categories.
- The most recent "Best Doctors in America" database includes 312 Wake Forest Baptist physicians in 36 specialties, 52 of whom are pediatricians and pediatric specialists at Brenner Children's Hospital.



LOCATIONS

Wake Forest Baptist provides adult and pediatric health care services to the residents of 24 counties in central and northwest North Carolina and southwest Virginia.



5 Community Hospitals



1 Children's Hospital



300+ Primary Care/ Specialty Clinics

- 1** NCI-Designated **Cancer Center**
- 1** Comprehensive **Stroke Center**
- 1** Level 1 **Adult Trauma Center**
- 1** Level 1 **Pediatric Trauma Center**
- 1** **Burn Center**
- 3** **Urgent Care Centers**
- 1** **Outpatient Surgery Center**
- 7** **Emergency Departments**
- 19** **Dialysis Centers**





HIGHLIGHTS

COMPREHENSIVE CANCER CENTER

The Comprehensive Cancer Center at Wake Forest Baptist Medical Center is proud to be among an elite group of cancer centers acknowledged as the nation's leaders in the fight against cancer. The National Cancer Institute's comprehensive designation is an assurance that our patients have access to the latest technologies, cancer treatments, clinical trials, and research.

PUBLIC HEALTH SCIENCES

The Division of Public Health Sciences (PHS) identifies strategies to enhance public health and prevent disease. PHS is a group of public health-oriented faculty and staff whose activities focus on developing better strategies for maintaining the health of the entire community.

WAKE FOREST INSTITUTE FOR REGENERATIVE MEDICINE

The Wake Forest Institute for Regenerative Medicine (WFIRM) is a leader in translating scientific discovery into clinical therapies. Physicians and scientists at WFIRM were the first in the world to engineer laboratory-grown organs that were successfully implanted into humans. Today, this interdisciplinary team is working to engineer more than 30 different replacement tissues and organs and to develop healing cell therapies—all with the goal to cure, rather than merely treat, disease.

INNOVATION QUARTER



3,700+

Tenants / Staff

2,000,000+ sq. ft.

Office, laboratory and educational space



5

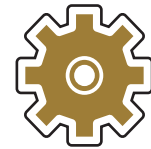
Academic institutions

Innovation Quarter area

330
acres

176

Companies



780 units

Living space
(lofts, condos, apartments)

1,400

Students



CLINICAL LEADERSHIP

**Julie Ann Freischlag, MD, FACS, FRCS,
Ed(Hon), DFSVS**

Chief Executive Officer, Wake Forest Baptist Health, and Dean, Wake Forest School of Medicine

Kevin P. High, MD, MS

President, Health System, Wake Forest Baptist Health

Lilicia Bailey, MBA, MA

Senior Vice President and Chief People Officer, Wake Forest Baptist Health

Bradley A. Clark, MBA, CTP

Executive Vice President and Chief Financial Officer, Wake Forest Baptist Health

Conrad Emmerich, MBA

Senior Vice President, Business Services, Wake Forest Baptist Health

Terry L. Hales, Jr., MBA

Senior Vice President, Academic Administration and Operations, and Executive Vice Dean, Wake Forest School of Medicine

James Hoekstra, MD, FACEP

Senior Vice President and Associate Dean, Network Clinical and Academic Affairs, Wake Forest Baptist Health

Russell M. Howerton, MD, FACS

Senior Vice President for Network Physicians and Health System Chief Medical Officer, Wake Forest Baptist Health

Will Showalter, MPA, MURP

Senior Vice President and Chief Information Officer Wake Forest Baptist Health

Alisa Starbuck, DNP

President, Brenner Children's Hospital
Vice President, Women and Children's Health Services, Wake Forest Baptist Health

J. McLain Wallace, Jr., JD

Senior Vice President and General Counsel, Wake Forest Baptist Health

Mike Waid, MBA

Senior Vice President, Health System Operations and Integration, Wake Forest Baptist Health

Cathleen A. Wheatley, DNP, RN, CENP

President, Wake Forest Baptist Medical Center
Senior Vice President and System Chief Nurse Executive, Wake Forest Baptist Health

Terry G. Williams, MBA

Executive Vice President, Chief Strategy Officer, Wake Forest Baptist Health

SCHOOL OF MEDICINE LEADERSHIP

**Julie Ann Freischlag, MD, FACS, FRCS,
Ed(Hon), DFSVS**

Chief Executive Officer, Wake Forest Baptist Health, and Dean, Wake Forest School of Medicine

Evelyn Y. Anthony, MD

Senior Associate Dean, Faculty Affairs, and Professor, Radiology, Wake Forest School of Medicine

Gregory L. Burke, MD, MS

Senior Associate Dean for Research, and Chief Science Officer, and Professor, Division of Public Health Sciences, Wake Forest School of Medicine

Dwayne W. Godwin, PhD

Dean, Graduate Programs in Biomedical Sciences, and Professor, Neurobiology and Anatomy, Wake Forest School of Medicine

Terry L. Hales, Jr., MBA

Senior Vice President, Academic Administration And Operations, and Executive Vice Dean, Wake Forest School of Medicine

James Hoekstra, MD, FACEP

Senior Vice President and Associate Dean, Network Clinical and Academic Affairs, Wake Forest Baptist Health

Mary Claire O'Brien, MD

Senior Associate Dean, Healthcare Education, and Professor, Social Sciences and Health Policy, and Professor, Emergency Medicine, Wake Forest School of Medicine

BOARD OF DIRECTORS

Donald E. Flow, Chair

William C. Warden, Jr., Vice Chair

Martha A. Alexander-Miller, PhD

Donna A. Boswell, PhD

Edward E. Cornwell, MD

Catherine D. DeAngelis, MD

Julie A. Freischlag, MD

Arthur A. Gibel

Nathan O. Hatch, PhD

A. Lee Herring

James J. Marino

J. Wayne Meredith, MD

George D. Renfro

Stephen L. Robertson

Adelaide A. Sink

John M. Vann

Sheree B. Watson

WEBSITES

- WakeHealth.edu
- School.WakeHealth.edu
- BrennerChildrens.org
- WakeForestInnovations.com
- WakeHealth.edu/Lexington
- WakeHealth.edu/Davie
- WakeHealth.edu/Wilkes
- WakeHealth.edu/HighPoint



STATs

Updated January 2019