

# CEAL Ultrasound Inventory

Feb. 2025

Bridget Francis, RDMS

Jamie Hadaway, RDMS, RVT

# Task Trainers

---



Lower Arm Tissue Insert  
for IV and Arterial Lines  
(Quantity 13)

The lower-arm tissue insert for IV and arterial lines phantom is used in combination with ultrasound for practicing ultrasound-guided procedures. This model contains the radial artery, ulnar artery, medial cubital vein and the cephalic vein. (Quantity 13)

NOTE: Please Use Sharp  
Unbent 18 – 21 Gauge Needles  
To Prevent Damage.



## Gen II PICC with IV & Arterial Line Vascular Access Ultrasound Trainer (Quantity 8)

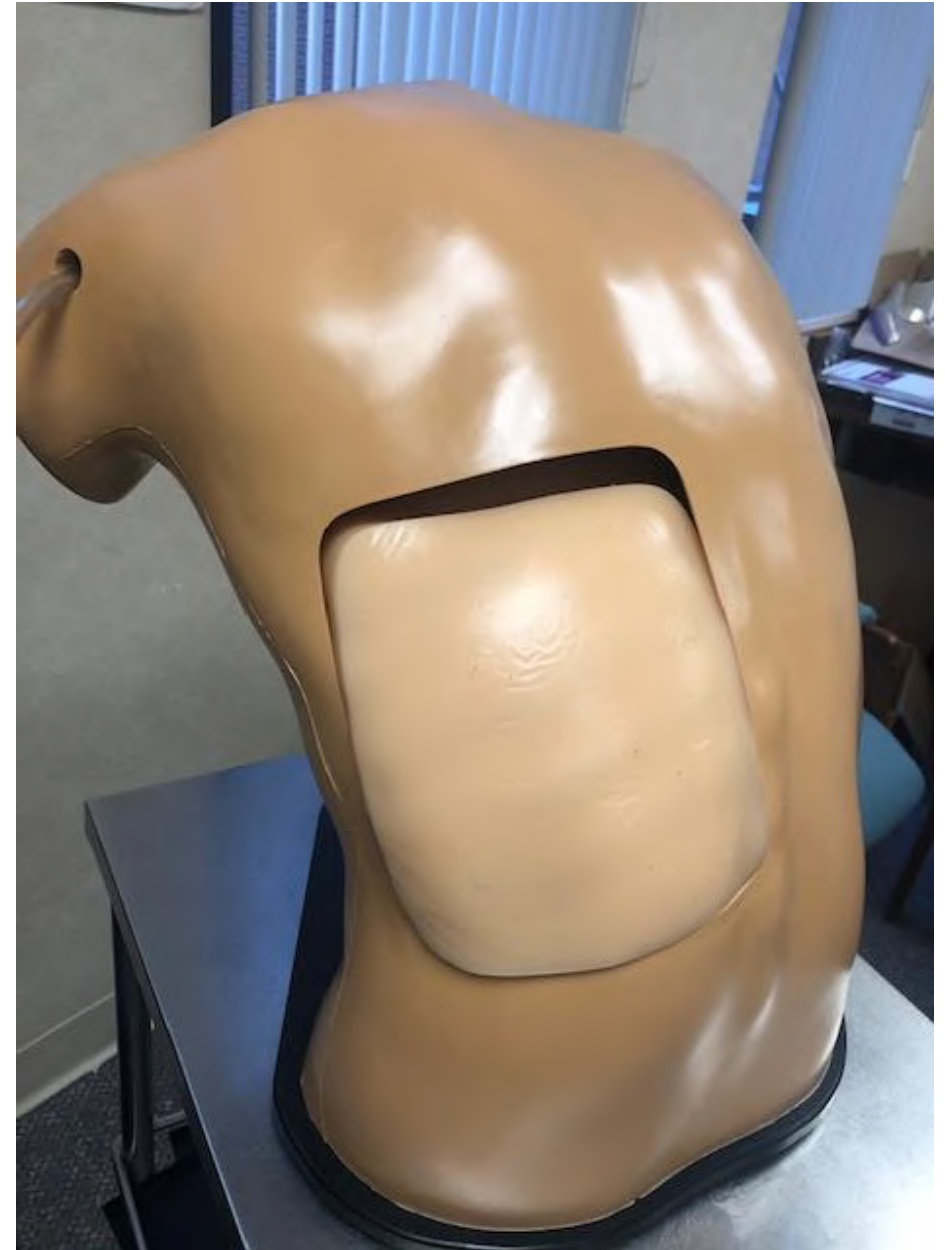
This phantom is used in combination with ultrasound for practicing ultrasound-guided procedures. In addition to verifying placement with ultrasound, x-ray can be used. This model can be used to practice PICC lines, arterial lines, and peripheral IV placements. The arm includes the brachial artery, brachial and basilic veins, radial artery, ulnar artery, medial cubital vein and the cephalic vein. An arterial pulse can be palpated and visualized when using ultrasound with the hand bulb. The chest section includes the superior vena cava and subclavian vein.

**NOTE:** Please Use Sharp Unbent 18 – 21 Gauge Needles To Prevent Damage.

# Midscapular Thoracentesis Ultrasound Training Model (Quantity 1)

This adult male training model is used in combination with ultrasound for ultrasound-guided thoracentesis procedures. The tissue insert contains the chest wall, superficial tissue, 6th, 7th, 8th, 9th ribs and intercostal spaces, pleural cavity with lung and atelectatic lung, diaphragm, and superior spleen.

**NOTE: Please Use Sharp Unbent 18 – 21 Gauge Needles To Prevent Damage.**



# Midscapular Thoracentesis Ultrasound Training Model (Quantity 1)

This adult male training model is used in combination with ultrasound for ultrasound-guided thoracentesis procedures.

**NOTE: Please Use Sharp Unbent 18 – 21 Gauge Needles To Prevent Damage.**





Paracentesis  
Ultrasound  
Training Model  
(Quantity 1)



This training model is an adult-sized human torso. It is used in combination with ultrasound. It contains the right lobe of the liver, small bowel, and a variety of fluid pockets ranging in size from small to medium to large.

**NOTE: Please Use Sharp Unbent 18 – 21 Gauge Needles To Prevent Damage.**



Ballistic gel with various toys melted inside. Good for finding objects and recognizing echogenicity changes from different structures. Best seen with a high-resolution transducer.

## Gel Molds with Toys



# Combination IUP Ectopic Pregnancy Transvaginal Ultrasound Training Model (Quantity 1)

Gravid first trimester transvaginal sonography training model. It contains both an intrauterine and ectopic pregnancy. The gestation is around 7 weeks with a complete amnion and placenta. An endovaginal probe will be needed. This phantom contains accurate external anatomy, the endovaginal canal, the bladder with a bladder wall, the cervix, a uterus with an intrauterine pregnancy, an extrauterine pregnancy, endometrium, left and right ovaries, ovarian follicles, a corpus luteum cyst, broad ligaments, maternal bowel and colon, free fluid in the cul-de-sac, and accessory structures. You can practice measuring the crown rump length, gestational sac, and cysts. This can be used with 2-D, 3-D, and 4-D imaging.





## Multi Vessel Ultrasound Training Block Model

Training model used in combination with ultrasound to practice ultrasound-guided venous and arterial procedures.

Quantities: 15

**NOTE:** Please Use Sharp Unbent 18 – 21 Gauge Needles To Prevent Damage.

# Scrotal Ultrasound Phantom (Quantity 2)

The scrotal ultrasound phantom is used in combination with ultrasound as a training model, designed to assess male reproductive organ for tumors, inflammation, and measurements. It comes with a normal insert and an abnormal insert.

**NOTE:** Please see the instructions in the case for insert exchange. Only use water to clean. Wipe with powder before putting away.

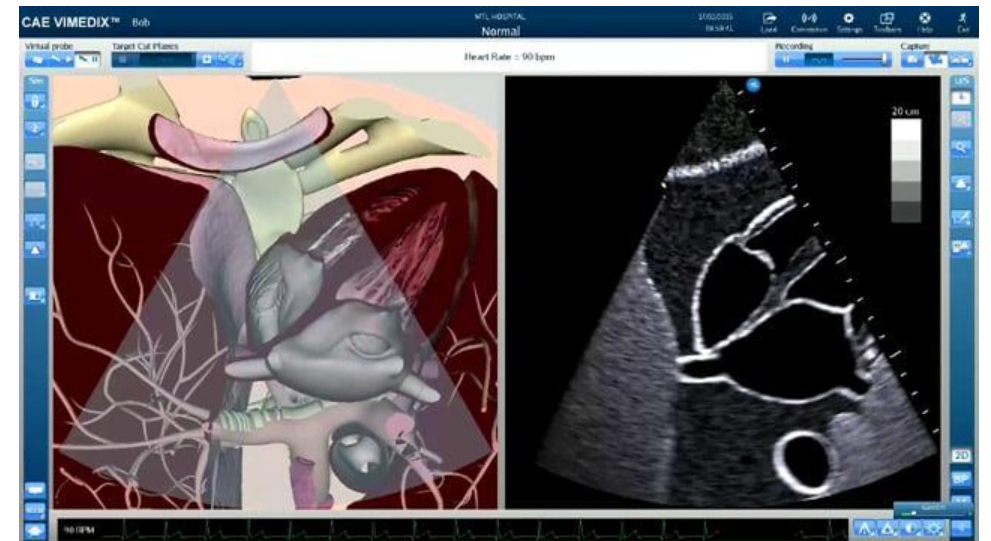
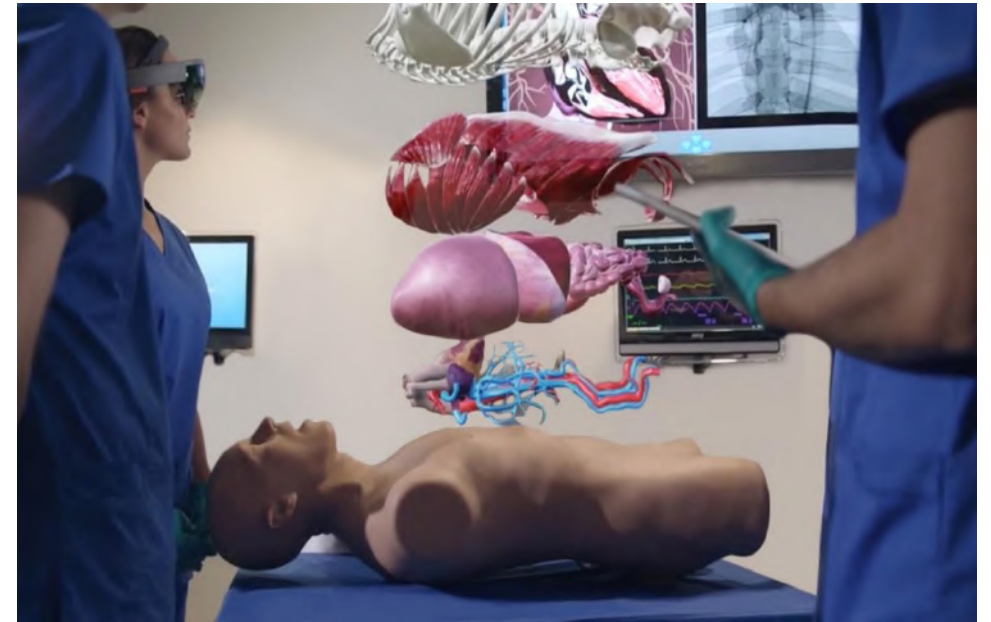




# CAE Vimedix Ultrasound Simulator (Quantity 1)

CAE Vimedix is a high-fidelity simulator that facilitates the learning process for cardiac, lung, abdominal and Ob/Gyn ultrasound – all on one common platform. With its state-of-the-art manikin-based system and innovative software tools, Vimedix assists the development of essential psychomotor and cognitive skills for ultrasound probe handling, image interpretation, diagnoses and clinical decision-making.

**NOTE:** The CAE Vimedix is a special request item that is only available at the Atrium Health Wake Forest Baptist Winston-Salem hospital campus.





Knee Phantom  
(Quantity 3)

Has fluid around the knee. This is used to practice knee injections/aspirations.



# Multi Vessel IV Block (Quantity 1)

Used to practice Ultrasound-Guided IVs.

**To use** - Fill the phantom with fluid and plug the ends or fill case with water and place gel block inside.



## Branched Vessel IV Block (Quantity 1)



Used to practice Ultrasound-Guided IVs.  
**To use** - Fill the phantom with fluid and plug the ends or fill case with water and place gel block inside.



# Ultrasound Machines

---

Philips Sparq

(Quantity 2)







Philips Lumify

(Quantity 2)



GE Venue Go

(Quantity 2)



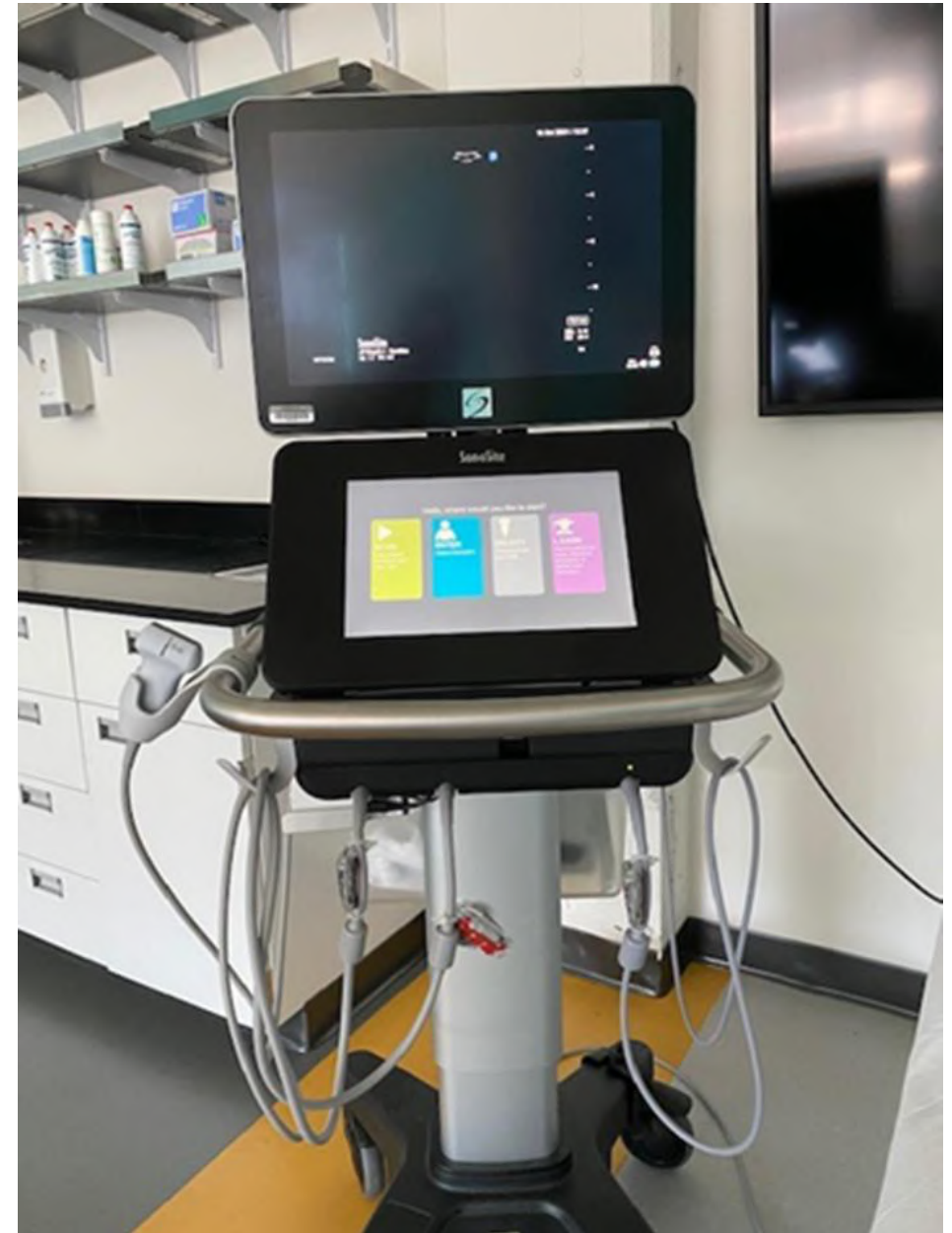
# Sonosite Edge

(Quantity 8)



# Sonosite Exporte

(Quantity 1 at the Bowman Gray  
Center for Medical Education  
downtown campus.)



# Sonosite PX

(Quantity 3)

