

2020



NP/CNM Student Resources



Nurse Practitioner

- **Education:** Completion of Master's or higher degree in Nursing or related field with a primary focus on Nursing and nationally accredited graduate level Nurse Practitioner education program.
- **Who Regulates:** Joint Subcommittee of the Medical Board and the Board of Nursing
- **What they do:** While historically the Nurse Practitioner role began in rural primary care, Nurse Practitioners now practice in many settings such as Specialty Practices, Hospitals, Managed Care, Long-term Care, and Public Health. Nurse Practitioners manage a broad range of health issues, emphasizing primary care and health promotion. Nurse Practitioners provide preventive services, counsel individuals and families, conduct physical examinations and diagnostic evaluation of illness and injury, prescribe therapeutics including medications, and monitor health status over time.

<https://www.ncbon.com/practice-nurse-practitioner-general-information>

Certified Nurse Midwife

- **Education:** Completion of a Post-Graduate certificate midwifery program, or a Master's in Nursing Degree midwifery program or another appropriate Master's degree program; national certification, continuing education, and recertification required.
- **Who Regulates:** Midwifery Joint Committee
- **What they do:** Provide well-woman and gynecological care for women of all ages (including family planning, infertility, preconception, menopause, and treatment of common health problems), obstetrical care including prenatal, postpartum, intrapartum, and newborn care. Certified Nurse Midwives attend births in hospitals, out of hospital birth centers, and at home. Certified Nurse Midwives have prescriptive authority in North Carolina.

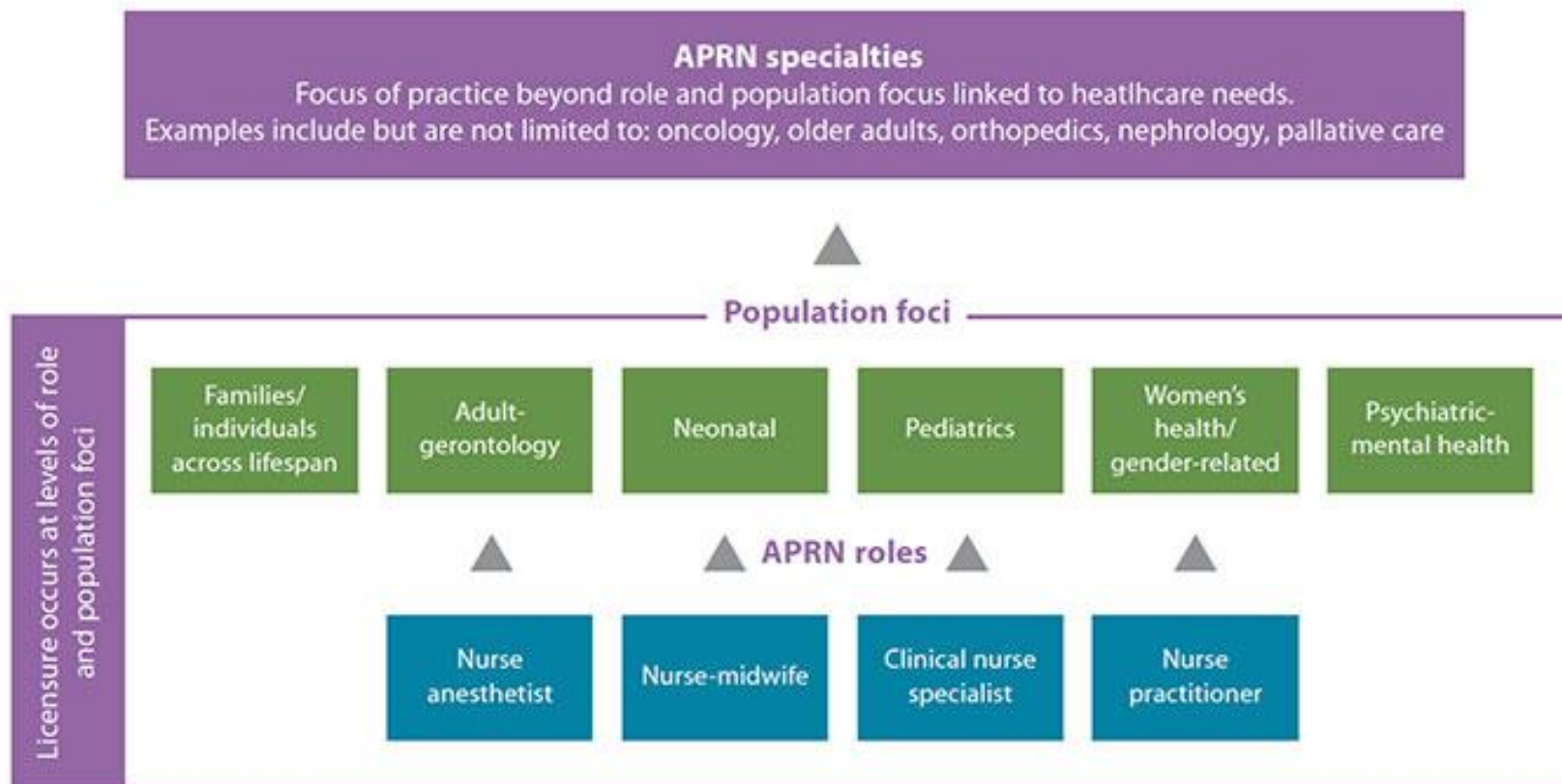
<https://www.ncbon.com/practice-certified-nurse-midwife>

Education

- **MSN Programs in North Carolina**
- <https://www.ncbon.com/education-programs-in-north-carolina-msn>
- **Doctorate Programs in North Carolina**
- <https://www.ncbon.com/education-programs-in-north-carolina-doctorate>

What's in the APRN Consensus Model?

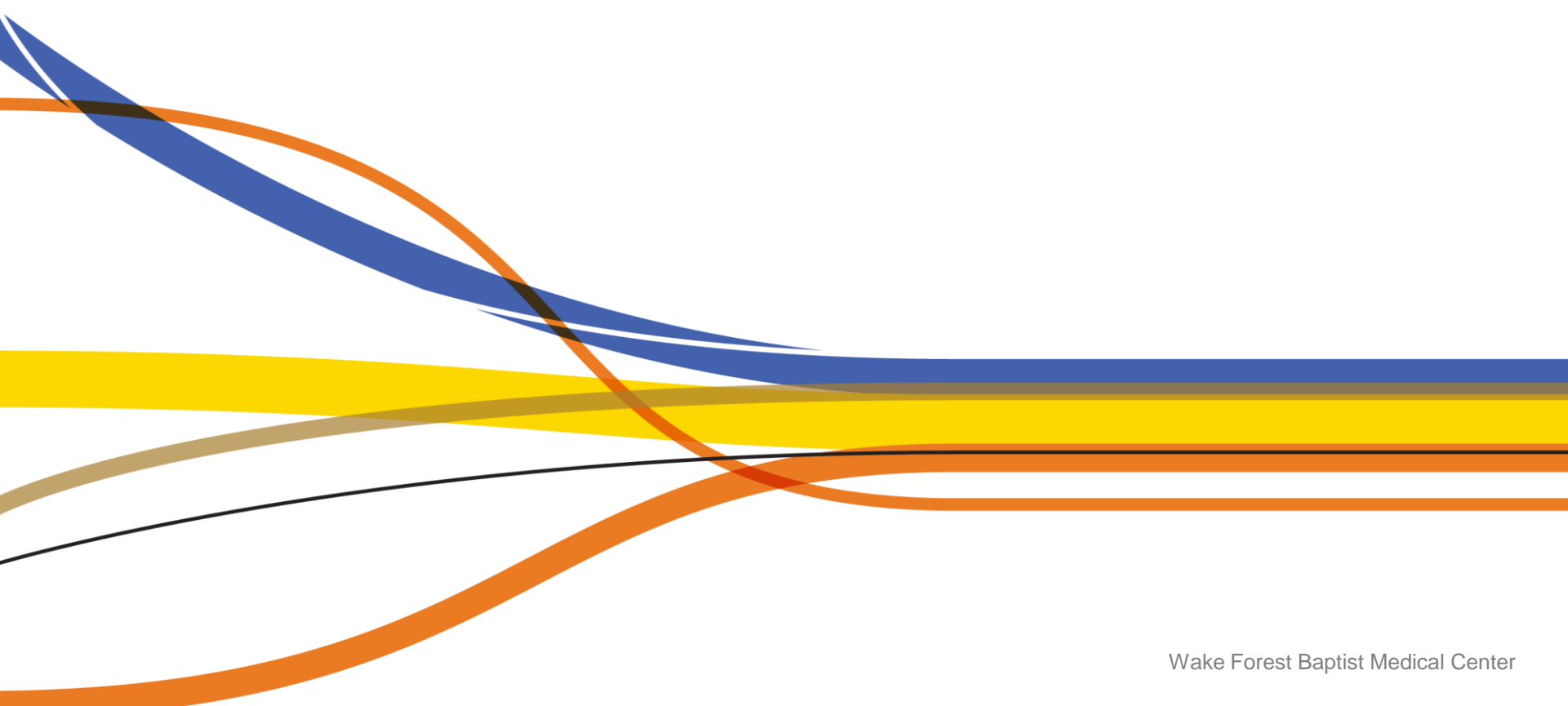
The Consensus Model standardizes licensure, accreditation, certification, and education and defines advanced practice RN (APRN) roles based on population foci. You can learn more about the model by reviewing the frequently asked questions page developed by the National Organization of Nurse Practitioner Faculties (goo.gl/dupTdD).



APRN Consensus Work Group, National Council of State Boards of Nursing APRN Advisory Committee. The Consensus Model for APRN Regulation: Licensure, Accreditation, Certification & Education. July 7, 2008. ncsbn.org/Consensus_Model_for_APRN_Regulation_July_2008.pdf

Preceptor Placement

- Current Process



Steps for Preceptorship- Step 1

- **The school coordinator or student emails nurseaffiliate@wakehealth.edu**
- **Nurse Affiliate will send clearance documents**
- **APP Liaison will send the “Getting to Know You” email**

Steps for Preceptorship- Step 2

- **Student completes clearance documents and submits to Nurse Affiliate and Contingent Workforce**
- **Once required documents are submitted, clearance can be granted, usually about 2-3 days after all their documents have been received.**

Steps for Preceptorship- Step 3

- **Once cleared, both the student and/or school coordinator receive a "Welcome" email saying they have been cleared and telling next steps.**
- **Once cleared, student is placed on the waiting list for the correct rotation they need.**

Steps for Preceptorship- Step 4

- **If a preceptor reports their availability, next student in line based on clearance date is placed with that preceptor.**
- **Preceptors may also request a specific student or a student from a specific school.**

Steps for Preceptorship- Step 5

- **Once available preceptor identified, student is connected with preceptor to coordinate schedules and student may initiate rotation.**
- **If preceptor identified by school coordinator or student, name of preceptor, student, practice location and dates must be communicated to APP Liaison.**

Steps for Preceptorship- Upcoming Changes

- **The Clinical Education department is working to streamline this process.**
- **Data software from My Clinical Exchange is being developed for the customized needs of NP/CNM students and will be in effect by spring 2021.**
- **When in use, schools will receive instructions regarding training and how to enroll their students .**

Preceptor Placement

- Upcoming Process

Steps for Preceptorship- Step 1

- **School Coordinator or Student**
 - Acquires access to My Clinical Exchange
 - Creates Request in MCE

Steps for Preceptorship- Step 2

- **APP Liaison**

- Determines Student Employment Status
- Changes the status to Verified/Denied
- Verified students receive access to clearance documents to complete and submit to Contingent Workforce

Steps for Preceptorship- Step 3

- **Contingent Workforce**

- Contingent workforce looks up Verified requests
- CW - Clears/Denies based on results of clearance documents

Steps for Preceptorship- Step 4

- **Preceptor**

- Preceptor looks up cleared requests
- Changes status to Acceptance

Steps for Preceptorship- Step 5

- **APP Liaison**

- Monitors for preceptor acceptance requests from Dashboard
- Approves and Records Rotation

Steps for Preceptorship- Important Reminders

- **It is never a guarantee that a student who goes through the clearance process will be assigned a preceptor.**
- **If a preceptor is not immediately available for a student, they will remain on the waiting list**
- **It will be the school or student's responsibility to keep their needs accurately updated in the MCE system.**

WFBH Preceptors

- If you are a preceptor interested in My Clinical Exchange access to allow you to select NP/CNM students for precepting opportunities, please email nurseaffiliate@wakehealth.edu