



Application due
Friday Dec. 12, 2025



WAKE FOREST SCHOOL OF MEDICINE

Postdoctoral Fellowship in Clinical Neuropsychology

APPCN Member Program

2026 - 2028

Rachel K. B. Hamilton, Ph.D., ABPP
Training Program Co-Director

Bonnie C. Sachs, Ph.D., ABPP
Training Program Co-Director

SETTING & **OVERVIEW**



Atrium Health Wake Forest Baptist Medical Center is a Level I trauma center located in Winston-Salem, North Carolina and home to the Wake Forest University School of Medicine, with a total of 198 buildings spanning 428 acres. The Department of Neurology at Atrium Health Wake Forest Baptist, where this fellowship is housed, has been ranked by US News and World Report as being among the nation's best hospitals. The Neurology Department is home to a Comprehensive Stroke Center, Comprehensive Epilepsy Center, and a new Neuroscience ICU, and has subspecialty clinics in neuromuscular/ALS, Movement Disorders, Stroke, Behavioral Neurology, Headache, Multiple Sclerosis, and Pediatric Neurology. Additionally, Atrium Health has recently been nationally recognized on Newsweek's List of Top 100 Americans Most Loved Workplaces for 2023.

As with most academic medical centers, Atrium Health Wake Forest Baptist and Wake Forest University School of Medicine strive to fulfill the integrated missions of patient care, research and teaching, and providing patients with leading-edge technology and clinical trials. The objective of providing high quality clinical care and research training to postdoctoral level fellows is very much in accord with the tripartite institutional mission of the Medical School and Center. More specifically, as with other graduate medical education programs at Atrium Health Wake Forest Baptist, our program mission is to train professionals who will become recognized as leaders in clinical care, applied research, and education.





Leah A. Chapman, Ph.D.

Pediatric Neuropsychologist

Assistant Professor of Neurology, Plastic & Reconstructive Surgery and Pediatrics (joint)

Clinical interests: Neuro-oncology; traumatic brain injury/concussion; epilepsy; medically complex pediatric cases

Research interests: Late-effects of chemotherapy and radiation on the developing brain; neurodevelopmental implications of craniosynostosis and surgical interventions; traumatic brain injury/concussion; Tourette's syndrome/tic disorders



Rachel K. B. Hamilton, Ph.D., ABPP

Assistant Professor of Neurology

Training Program Co-Director

Clinical interests: Seizure disorders; neurodegenerative disease; developmental trauma; psychiatric comorbidity; acquired brain injury; substance-induced cognitive syndromes; autoimmune conditions; culturally influenced presentations; diagnostically complex cases

Research interests: Psychopathy and cognition; decisional capacity; frontotemporal dementia and social cognition; neural networks



Hana Kuwabara, Ph.D.

Assistant Professor of Neurology

Clinical interests: Concussions/TBI, epilepsy, hypoxic/anoxic brain injury, neurodegenerative disorders, postoperative cognitive dysfunction, functional neurological disorders (FND), psychiatric comorbidity

Research Interests: Sport-concussion, cross-cultural assessment, psychometrics, optimizing FND care



Shannon McNally-Rex, Ph.D.

Assistant Professor of Neurology

Clinical interests: Neurodegenerative disease; neuro-oncology; traumatic brain injury/concussion; cerebrovascular disease and stroke; movement disorders; epilepsy; complex medical comorbidities; capacity evaluations

Research interests: Risk and protective factors in aging; cerebrovascular disease; traumatic brain injury; structural/functional neuroimaging; alcohol use disorder; cognition pre- and post-treatment for primary brain tumors



Bonnie C. Sachs, Ph.D., ABPP

Professor of Neurology, Gerontology & Geriatric Medicine (joint)

Training Program Co-Director

Clinical interests: Alzheimer's disease; Mild Cognitive Impairment; atypical dementias, movement disorders

Research interests: Lifestyle interventions for Mild Cognitive Impairment; dementia; DBS for movement disorders; psychometrics; vascular disease/cognitive impairment



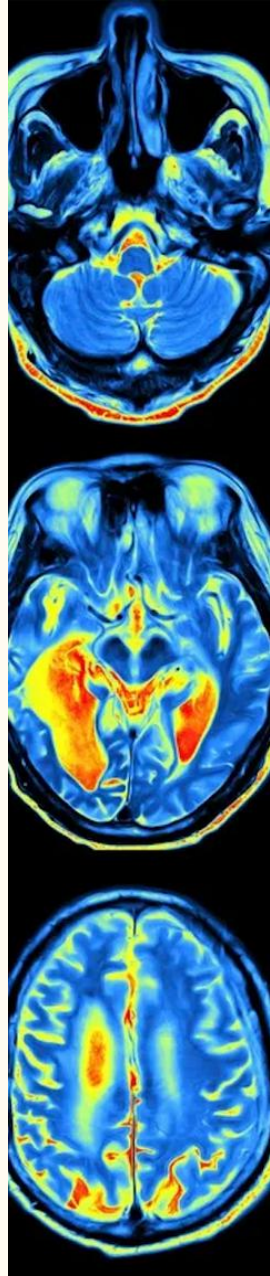
Lia K. Thibodaux, Ph.D.

Pediatric Neuropsychologist

Assistant Professor of Neurology

Clinical interests: Epilepsy, genetic disorders, and accessible assessments for patients who are deaf and hard of hearing.

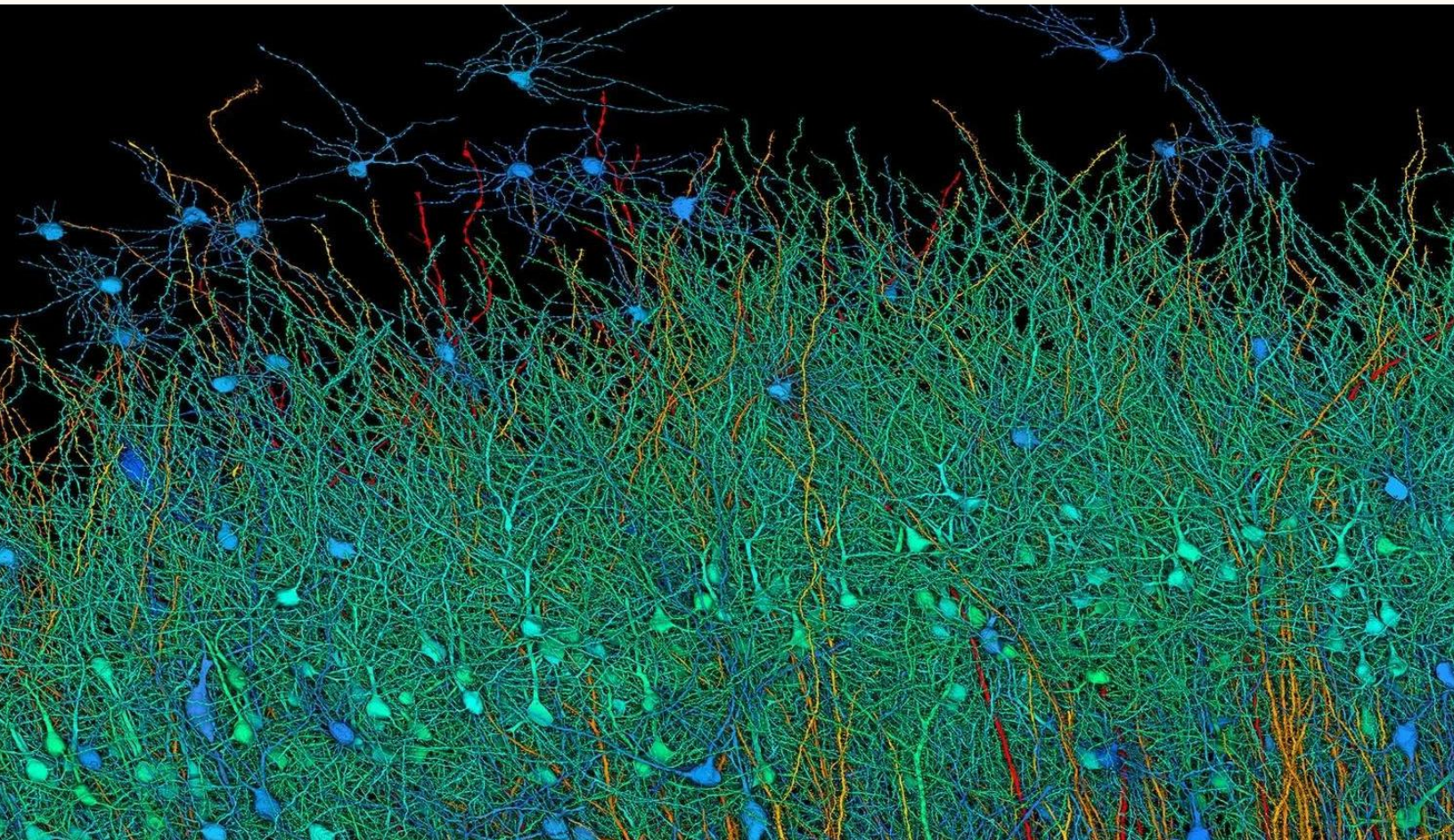
Research interests: Measurement equivalence/ invariance of scores within specialized populations and utility of commonly used measures in specialized populations



| FACULTY

OUR MISSION

The Wake Forest School of Medicine Postdoctoral Fellowship in Clinical Neuropsychology is dedicated to cultivating future leaders in the field of neuropsychology. The overarching goal of our fellowship program is to produce outstanding scientist-practitioners who are rigorously trained with a broad-based foundation in assessment, intervention, consultation, and research. We strive to mold professionals who are not only intellectually curious and culturally adept but also skilled collaborators across medical disciplines. At the heart of our mission is the development of six core competencies: (1) patient care that is compassionate, effective, and unparalleled in clinical excellence; (2) expertise in neuropsychological knowledge, including psychometrics, brain-behavior relationships, and comprehensive assessment techniques; (3) practice-based learning focused on continuous improvement through self-evaluation and the advancement of critical thinking that seamlessly integrates state-of-the-art evidence-based practice; (4) strong interpersonal skills and interdisciplinary collaboration, preparing fellows to be effective team players in complex healthcare environments; (5) professionalism and the commitment to ethical practice and respectful interactions; and (6) systems-based practice as manifested through an awareness of and responsiveness to the larger context and system of health care.



CLINICAL TRAINING



The Wake Forest School of Medicine Postdoctoral Fellowship in Clinical Neuropsychology is a two-year full-time program that meets Houston Conference Guidelines for training in neuropsychology. We are a member of the Association of Postdoctoral Programs in Clinical Neuropsychology (APPCN) and participate in the APPCN Resident Matching Program ([the "Match"](#)). **We anticipate offering TWO positions for the adult track for the 2026 training year.**

Our fellowship involves opportunities to see adult patients through the general Neuropsychology Clinic and specialty clinics. Pediatric training opportunities may be available for interested applicants. The Neuropsychology Service at Atrium Health Wake Forest Baptist serves as the primary training site for all fellows. Outpatients make up the bulk of referrals, though an inpatient rotation is also available. Referrals involve a wide variety of patient populations, including dementia, movement disorders, multiple sclerosis, traumatic brain injury, stroke, epilepsy, and neuro-oncology. For more information, please visit our Neuropsychology Clinic website and the Fellowship webpage:

- <https://www.wakehealth.edu/Specialty/n/Neuropsychology>
- <https://www.wakehealth.edu/Service-Line/n/Neuroscienceshttps://school.wakehealth.edu/Education-and-Training/Residencies-and-Fellowships/Postdoctoral-Fellowship-in-Clinical-Neuropsychology>

In addition to seeing patients through the **general outpatient neuropsychology clinic**, fellows will participate in the following clinical experiences and rotations:

- 1) **Presurgical Movement Disorders Evaluations:** Fellows will evaluate patients with movement disorders as part of pre-surgical workups for Deep Brain Stimulation (DBS), Gamma Knife surgery, and select focused ultrasound (FUS) procedures for patients with Parkinson's disease, essential tremor, and dystonia syndromes. Fellows will participate in the bimonthly multidisciplinary case conference and, if interested, the monthly Huntington's Disease Multidisciplinary Clinic at Miller Plaza.
- 2) **Presurgical Epilepsy Evaluations:** This rotation involves Phase I neuropsychological assessments for epilepsy surgery candidates. Fellows will present findings at bimonthly Comprehensive Epilepsy Center case conferences. Additional opportunities include conducting post-operative evaluations, assisting with Wada testing, and evaluating non-surgical epilepsy patients referred for various clinical reasons.
- 3) **GeriNeuro & Cognitive Disorders Rotation:** This rotation focuses primarily on dementia evaluations, with the majority of patients being older adults. This rotation provides exposure to younger-onset neurodegenerative syndromes, including atypical presentations of Alzheimer's disease and frontotemporal dementia syndromes. A central focus of this experience is the development of advanced skill in differential diagnosis.
- 4) **Inpatient ABI Rotation:** Fellows may participate in a multidisciplinary treatment team within the inpatient rehabilitation unit. This rotation primarily occurs on the Acquired Brain Injury Unit and emphasizes brief cognitive and emotional screening. It also includes providing education to caregivers and staff about the nature and implications of cognitive deficits. Although this is not a cognitive rehabilitation rotation, fellows play an important role in the rehabilitation process by delivering same-day feedback to patients, caregivers, and the treatment team to inform ongoing treatment planning.
- 5) **Neuro-Oncology Rotation:** This rotation provides fellows with specialized training in the neuropsychological assessment of individuals with known structural brain lesions, including primary and metastatic brain tumors. Based at the AHWFB Comprehensive Cancer Center, this experience includes presurgical cognitive screenings to inform treatment planning, as well as post-treatment and longitudinal evaluations to monitor cognitive, behavioral, emotional, and functional outcomes over time. The patient population is medically complex, and the rotation emphasizes interdisciplinary collaboration.
- 6) **HOBSCOTCH:** Postdoctoral fellows with an interest in cognitive remediation may have the opportunity to serve as a Cognitive Coach for adults with epilepsy through the HOBSCOTCH (Home-Based Self-management and COgnitive Training CHanges lives) program. This intervention targets cognitive dysfunction using Problem Solving Therapy and cognitive remediation strategies.

The typical caseload of adult fellows is 3-4 cases per week with some psychometry support. Due to the variety of offerings, clinical opportunities range from 1-hour screenings to 4- or 6-hour comprehensive evaluations. All fellows provide consultation to referral sources, deliver feedback to patients and families, and participate in intervention planning and monitoring when appropriate.





RESEARCH & **DIDACTICS**

Didactic opportunities are plentiful and include weekly Neuropsychology Seminar, multidisciplinary team meetings (Epilepsy Surgery Case Conference, DBS Case Conference, & Tumor Boards), and quarterly Psychometry Meetings. Neurology Department Grand Rounds are held twice monthly. Elective didactics include Epilepsy Journal Club, Cancer & Cognition Research Meetings, Psychiatry Department Grand Rounds, Pediatric Grand Rounds, Clinicopathologic Conference, Brain Cutting, Radiology Grand Rounds, and ADRC Consensus meetings.

As part of our fellowship curriculum, fellows must complete a Scholarly Project and Teaching Requirement. This dual focus reflects our commitment to developing well-rounded, independent neuropsychologists grounded in the scientist-practitioner model and aligned with APPCN standards. Fellows must deliver a 45-minute didactic presentation annually focused on a topic that is empirically based and relevant to neuropsychology. Presentations may address neuroanatomy, test interpretation, cultural considerations, ethical issues, emerging research, or broader intersections with cognition such as sleep, substance use, or systemic health. Fellows must also complete a scholarly project from one of the following categories: research using large datasets, quality improvement, educational programming, community outreach, or scholarly writing. Each project is tailored to the fellow's interests and must result in a defined scholarly product (e.g., manuscript draft, poster, clinical resource). Projects are approved by a faculty mentor and presented at a Spring Capstone, offering a culminating opportunity to share insights and demonstrate professional growth.

Where History Meets Innovation:

WINSTON SALEM

Known as the City of Arts and Innovation, Winston-Salem blends historic charm with the vibrant spirit of contemporary Southern culture.

Located less than 2 hours from the Blue Ridge Mountains and 4 hours from the North Carolina coast, Winston-Salem offers the perfect melding of a historical heritage and a forward-thinking community. At the heart of this heritage lies Old Salem, a living history museum and one of America's most authentic and well-documented colonial sites. The city's walkable downtown boasts over 100 restaurants, from cozy cafes to fine dining establishments. The vibrant arts scene, anchored by institutions like the Stevens Center and the Southeastern Center for Contemporary Art, provides year-round cultural enrichment.

The city experiences all four seasons, with mild winters and warm summers. Spring and fall are particularly pleasant. The climate is perfect for enjoying the city's numerous greenways and public parks, including Salem Lake and the scenic Reynolda Gardens.

Education and innovation are at the heart of Winston-Salem. The presence of prestigious institutions like Wake Forest University and the University of North Carolina School of the Arts contributes to a dynamic, intellectually stimulating environment. The city's commitment to innovation is evident in its thriving business sector, which balances established industries with emerging tech startups. Housing options are diverse, ranging from historic homes in charming neighborhoods to modern apartments in the bustling downtown area. The cost of living remains reasonable compared to larger metropolitan areas, making Winston-Salem an attractive option for families and young professionals.

With its blend of Southern hospitality, cultural richness, economic opportunities, and natural beauty, Winston-Salem offers a community that values both its heritage and its future.







ALL WELCOME

The Wake Forest School of Medicine Postdoctoral Fellowship in Clinical Neuropsychology is committed to training exceptional clinicians who can effectively serve all patients and communities. We follow applicable federal guidelines and professional standards in our training and recruitment practices.

Our program emphasizes the clinical skills necessary for culturally competent patient care and prepares fellows to address the neuropsychological needs of all community members. We welcome fellows from all backgrounds and focus on developing clinical expertise, research skills, and professional leadership capabilities. By maintaining rigorous training standards, we prepare graduates to provide excellent patient care, advance healthcare access and quality, and contribute meaningfully to the field of neuropsychology.

APPLICATION PROCESS

We anticipate TWO adult-focused openings for the 2026 cycle. Our program participates in the APPCN Match, and adheres to all pertinent rules and procedures associated with the match as outlined of their website.

Education/training qualifications: Requirements include prior neuroscience courses, APA or CPA approved internship with a strong emphasis on neuropsychology, commitment to clinical research, and completion of doctoral requirements. Prior to appointment as a postdoctoral fellow, individuals must provide evidence of completion of all requirements for the doctoral degree from a regionally accredited university or professional school program, including completion of an APA or CPA accredited internship training; official transcript, copy of diploma or official letter from the Department Chair or Graduate Advisor will be acceptable. Postdoctoral fellows are appointed to full time positions for one year, renewable for an additional year. A total of 2000 hours of training are provided in each year, exceeding the postgraduate hours required for licensure in NC.

Candidates should submit their application electronically by December 12, 2025. Interviews will be held virtually to increase accessibility and equity, with the opportunity to meet with faculty who attend INS. Whether or not applicants are able to attend INS will not factor in to rankings.

We are a member of Association of Postdoctoral Programs in Clinical Neuropsychology (APPCN) and participate in the APPCN Resident Matching Program.


The following should be emailed as a single document to April Edwards, Fellowship Coordinator at apedward@wakehealth.edu:

- Completed application cover page (located on the next page)
- A 1-2 page maximum Personal Statement describing your clinical and research experiences and interests, fellowship objectives, and career goals
- Current curriculum vitae
- Names, affiliation, and e-mail addresses of three professional references
- Three de-identified sample reports reflecting a breadth of clinical experience.
- Up to three recently published articles, abstracts, or preprints (if available).
- Three letters of recommendation, at least one of which is from your current supervisor/internship director, should be emailed directly by them to apedward@wakehealth.edu
- Official graduate transcript sent directly to:

April Edwards, Fellowship Coordinator
(apedward@wakehealth.edu)
Wake Forest University School of Medicine
Department of Neurology
Medical Center Boulevard
Winston-Salem, NC 27157



SUMMARY OF **BENEFITS**



Benefits include health insurance, personal time off (sick leave, vacation time, time for professional development), and an annual professional development fund. Postdoctoral fellows are eligible for 15 business days of paid vacation, 5 days of paid sick leave, and 5 professional days per academic year for the attendance at professional and scientific meetings. There is annual paid time off for 7 federal holidays as well as two floating holidays recognized by Atrium Health Wake Forest Baptist Medical Center: Labor Day, Thanksgiving Day, Christmas Day, New Year's Day, Martin Luther King, Jr. Day, Memorial Day, and Fourth of July.

Salaries are based on NIH training stipend guidelines.

Parental Leave

Family Medical Leave provides eligible teammates with up to 12 weeks of unpaid, job-protected leave for events such as the birth of a child, adoption of a child, or to bond with a newborn child. To be eligible for FMLA leave, a teammate must have completed one year of service with the Medical Center and worked at least 1,250 hours during the last 12 months. A teammate on FMLA leave will continue to receive benefits coverage if he/she pays his/her portion of the benefits.

Medical Leave

Non-FMLA Medical Leave may be granted for a teammate's own serious health condition if they are not eligible for FMLA Leave. A serious health condition includes the period of incapacitation resulting from giving birth, or pregnancy. A teammate on non-FMLA Leave will continue to receive benefits coverage if they pay their portion of benefits.

Postdoctoral Fellowship in Clinical Neuropsychology



APPLICATION COVER PAGE

NAME _____

PHONE NO _____

EMAIL _____

MAILING ADDRESS _____

PLACE OF BIRTH _____ CITIZENSHIP _____

TESTING EXPERIENCE: Please list specific numbers of comprehensive neuropsychological assessments administered, neuropsychological screenings (e.g., RBANS, DRS-2 only), and reports you have written on the following patient age groups:

	Comprehensive Neuropsychological Evaluations	Screening Assessments	Written Reports
Child (age 6-17)			
Adult (18-65)			
Geriatric (65 and older)			

Average number of comprehensive assessment cases completed/week during internship: _____

Average number of neuropsychological screenings completed/week during internship: _____

RESEARCH EXPERIENCE: Please list the patient samples you have worked with and the methods employed:
